



# GMT MONTHLY MEMBERSHIP PROGRESS REPORT

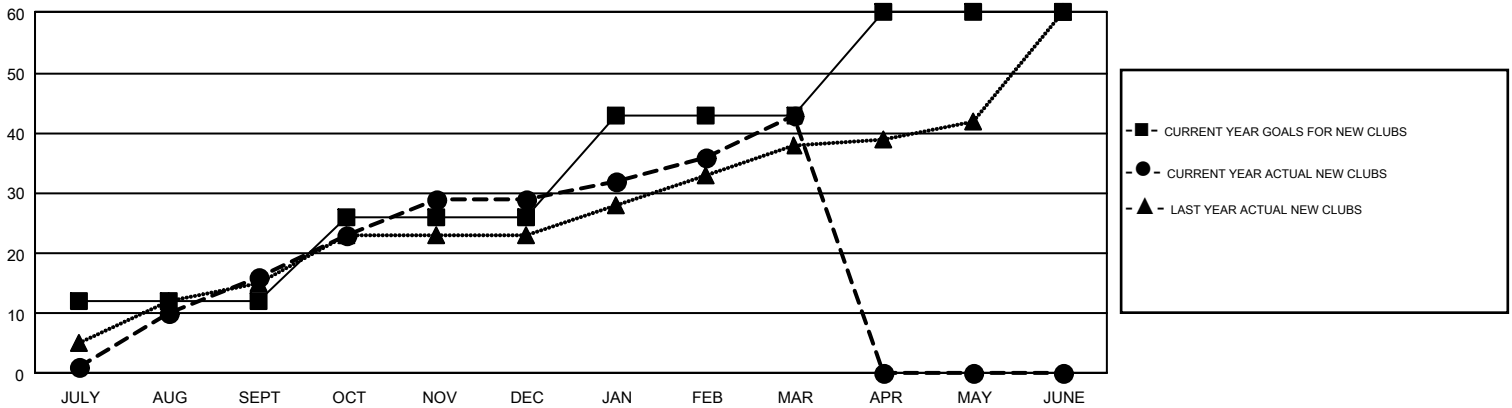
Results as of: 3/31/2017

## GMT Constitutional Area 7

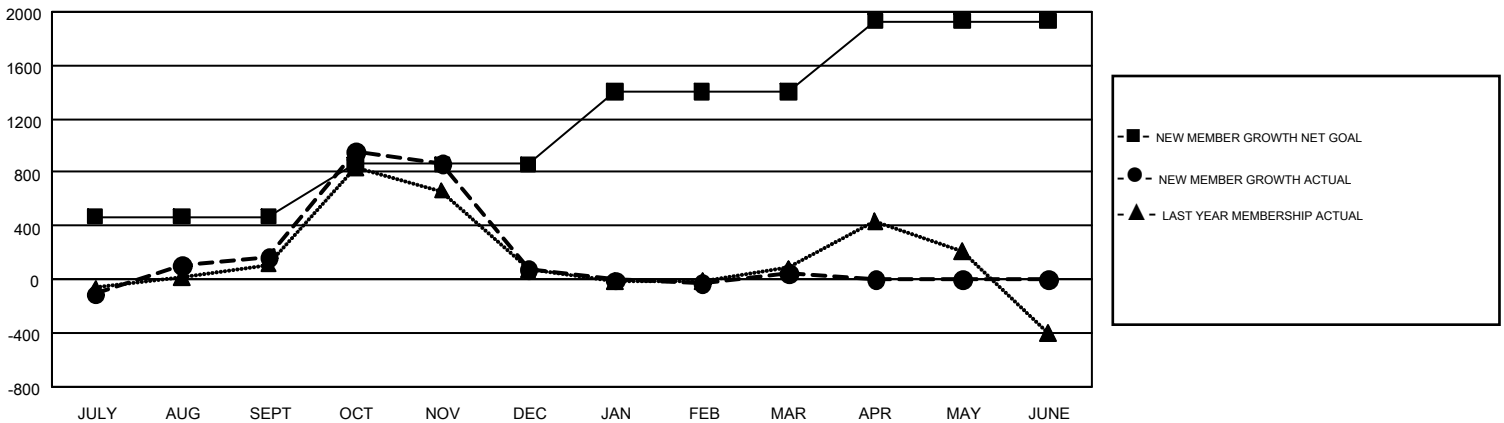
REPORT DOES NOT INCLUDE CLUBS IN UNDISTRICTED AREAS.

Clubs				Members			
RESULTS FOR 2016-2017				RESULTS FOR 2016-2017			
QUARTER	NEW CLUB GOAL	NEW CLUBS	DROPPED CLUBS	QUARTER	NEW MEMBER GROWTH NET GOAL (not reinstated or transfers)	NEW MEMBER GROWTH ACTUAL (not reinstated or transfers)	DROPPED MEMBERS ACTUAL (including transfers)
JULY/AUG/SEPT	12	16	8	JULY/AUG/SEPT	471	1,654	1,488
OCT/NOV/DEC	14	13	14	OCT/NOV/DEC	390	1,832	1,923
JAN/FEB/MAR	17	14	6	JAN/FEB/MAR	542	1,232	1,261
APR/MAY/JUNE	17	0	0	APR/MAY/JUNE	530	0	0

GOALS AND ACTUAL NEW CLUBS CUMULATIVE



GOALS AND ACTUAL MEMBERS CUMULATIVE



DROPPED CLUBS: 28	1,152 CLUBS OF 1,931 ADDED 1 OR MORE NEW MEMBERS	<b>GENDER DISTRIBUTION</b>
<b>DROPPED MEMBERS</b>		MALE                    28,880 (63.61%)
DECEASED                    384		FEMALE                    16,519 (36.39%)
CLUB CANCELLED                182	<a href="#">CLICK HERE FOR CUMULATIVE MEMBERSHIP DATA</a>	TOTAL FAMILY UNIT MEMBERS                    7,417
OTHER                            4,105		FAMILY MEMBERS PAYING HALF DUES                    3,827
<b>TOTAL                            4,671</b>		